

# ScriptTech News & Updates

JUNE 25, 2005

## TMX/TP ANNOUNCED!

### THE LATEST FROM SCRIPTTECH:

#### TMX T/P:

- IMPROVED INTEGRATION
- NEW FUNCTIONALITY & CONNECTIVITY
- PUBLISH NARRATIVES DIRECTLY TO QADIRECTOR
- LEARN & UPDATE OBJECTS AUTOMATICALLY
- UPDATED DOCUMENTATION & SUPPORT

### CLIMBING MT. AUTOMATION: VIRTUAL SEMINARS

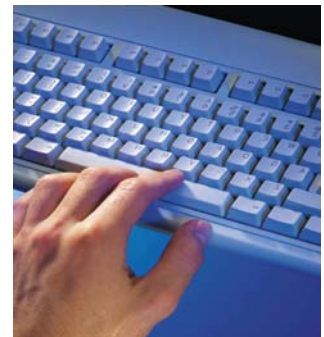
The latest version of TMX is specifically configured to generate executable scripts for Compuware's TestPartner, providing a sophisticated keyword interface to the powerful industry leading TestPartner automation tool.

With TMX/TP you can fully utilize your existing TestPartner technical experience to gain keyword flexibility and functionality. Take advantage of your existing expertise while opening up automated testing to your QA and business analysts with TMX/TP's intuitive point and click interface. As a result you reduce the learning curve of automation - allowing the QA and business analysts to get up to speed and be more productive sooner. TMX/TP provides a "single point" test

library for both manual and automated test cases allowing easy identification of where changes have taken place within the application under test and which test cases are affected. Then automatically update all of the affected test cases - thereby reducing time and cost associated with the maintenance tests. No more manually searching through the entire test library to identify impact on test cases whenever the application under test changes.

TMX/TP can also be configured to generate almost any procedural code such as Java, C++, VB, C#, TCL or custom scripting. The user has complete control of the generated script code. TMX can generate scripts for web, client-

server and host based applications - even embedded environments like cell phones and PDAs.



The TMX/TP keyword interface allows your business and non-technical QA analysts to become directly involved in the creation, maintenance and management of fully executable TestPartner scripts without technical training or experience.

## CLIMBING MT. AUTOMATION: VIRTUAL SEMINARS

Due to the popularity of the Climbing Mt. Automation seminars, ScriptTech has decided to produce a series of "virtual" seminars that will present much of the same information and material via the web in short-concise sessions that can easily be viewed in 15 to 20 minutes.

The first seminar is scheduled for June 30 and will be accessible from the ScriptTech

website. Access to the seminars is via the ScriptTech home page at [www.scripttech.com](http://www.scripttech.com).



Follow the links to Climbing Mt. Automation in the lower right corner.

Each session will concentrate on specific issues regarding automation and testing. These will include a background into automation, automated testing "pain points", selecting the appropriate tools, and establishing your automation plan.

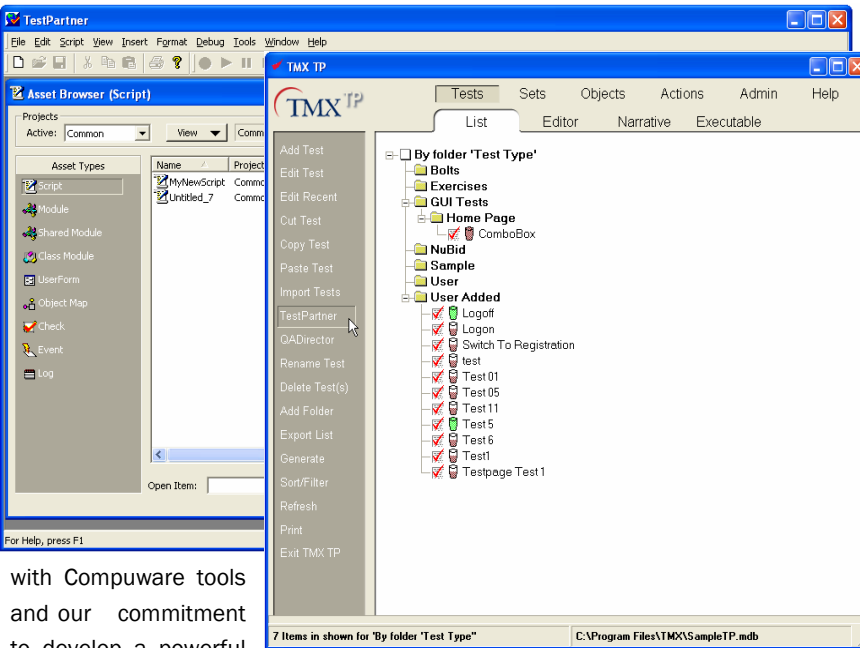
## TMX/TP: REDEFINING TEST AUTOMATION

TMX/TP provides a significant improvement with TestPartner and QADirector. Intended for customers using Compuware components such as QADirector, this release shows ScriptTech's continued focus to provide strong compatibility

- **New** functionality to launch TestPartner and QADirector directly from TMX/TP – providing easy switching between TMX/TP and QACenter components.
- **Functionality** to publish Test

- **TMX/TP** includes a customized TestPartner Utility that “learns” objects from application screens – directly updating the TMX/TP Object Tree without the need for separate import/export steps.

integrate even more closely with TestPartner and QADirector. These changes will allow TMX/TP to directly update the TestPartner databases through a proposed API when test scripts are generated as well as inspect the TestPartner databases for existing scripts and objects.



with Compuware tools and our commitment to develop a powerful partnership.

- **Updated** look and feel that is more consistent with TestPartner and QACenter resulting in a true integrated workspace.

Narratives generated by TMX/TP directly into QADirector. This adds new tests into QAD as well as updating the test in QAD whenever the TMX/TP Test Case narratives are revised.

While running as a TP script – it can also launch directly from within TMX. While this utility is “open source” to the user, it supports Web, Client Server and Emulator application as delivered.

- **Revised** TMX/TP user manual with specific topics

on the interface between TMX/TP and TestPartner and all of the new features and functions.

- **TMX/TP** has numerous internal improvements and changes designed to

*Keywords* seem to be the latest thing to hit automated software testing.

But at ScriptTech we've used the concept all along in our next-generation test automation tool - **TMX**.

Now the industry has finally caught on!

## ABOUT SCRIPTTECH, INC.

Since 1999 ScriptTech has been providing the tools and services to build and integrate automated testing to meet today's requirements of “internet speed” development. From our next-generation automation tool, TMX 3.0 and TMX/TP, installation and

training to on-site consulting, ScriptTech will provide the support your testing project demands.

For more information please visit us on the web at [www.scripttech.com](http://www.scripttech.com), call at 415-924-3140 or e-mail us at [sales@scripttech.com](mailto:sales@scripttech.com).



40 Mariner Green  
Corte Madera, CA 94925  
(415) 924-3140  
[www.scripttech.com](http://www.scripttech.com) · [sales@scripttech.com](mailto:sales@scripttech.com)